

# *McKinney Slough Bridge – Utility Relocation*

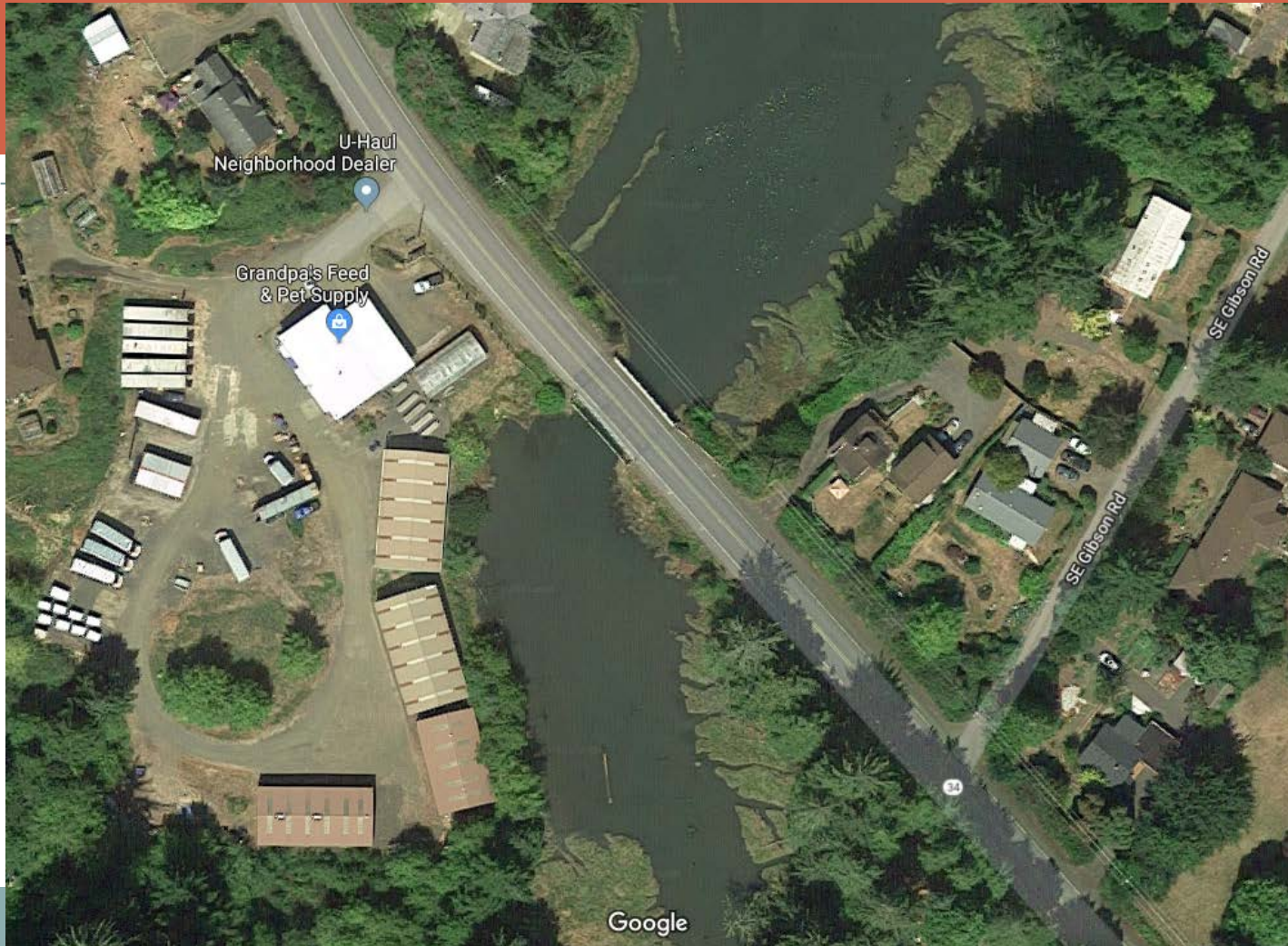
*Panel Discussion: Difficult Transportation Decisions*

*Northwest Transportation Conference*

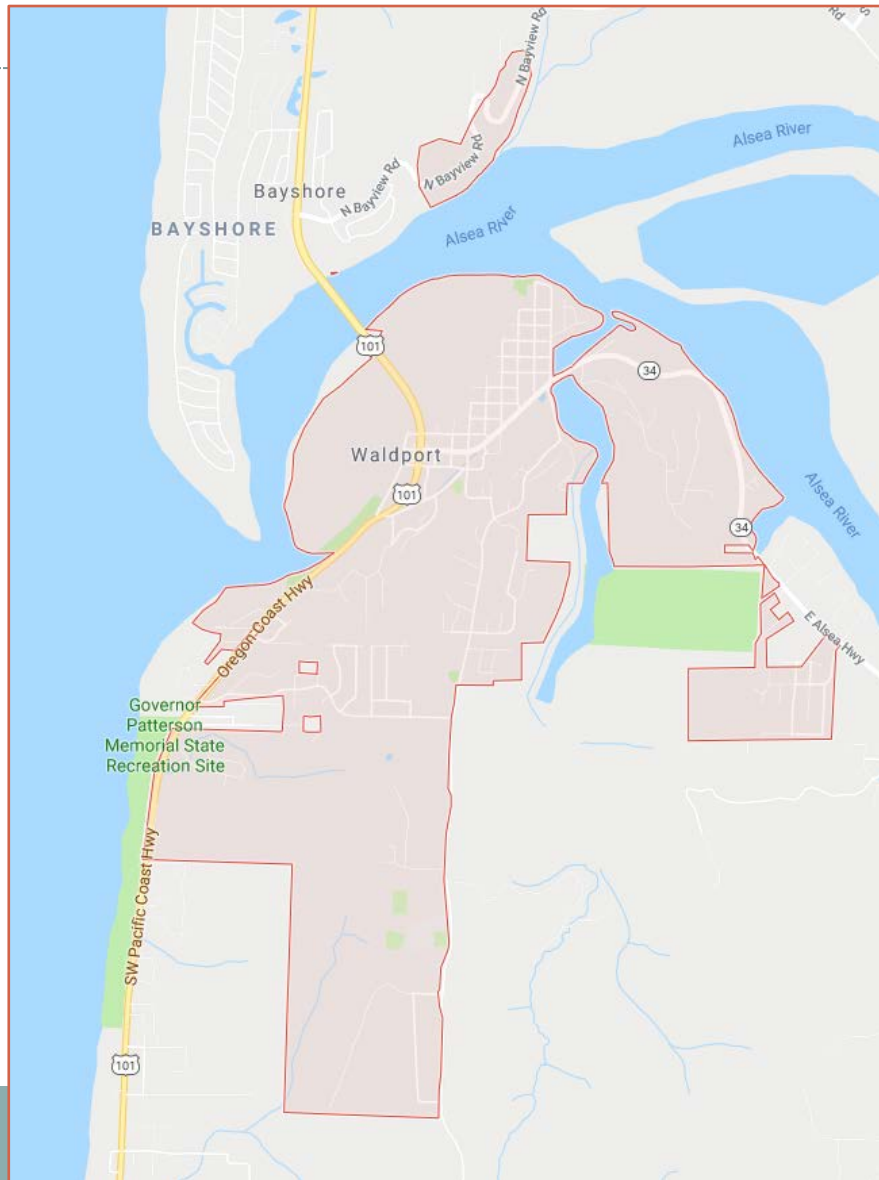
*Corvallis, Oregon – March 13, 2018*



# Waldport/McKinney Slough Bridge



# Historical Context/Background



- State Highway 34 adopted 1921
- McKinney Slough is on the eastern edge of town
- City annexations over time, existing utilities infrastructure along state highways, with at least 20 ODOT permits

# McKinney Slough Bridge



# Bridge Project

- Originally ODOT had a smaller rehabilitation planned
- 2012-15 STIP amended in 2014
- \$6M replacement programmed in 2015-18 STIP
- Larger project considerably wider, taller and longer than the existing bridge

# Water Utility Relocation



# Water Utility Relocation

- In anticipation of smaller bridge rehab:
  - City completed work in 2014
  - City budgeted relatively small amount in 2015 CIP
- Design meetings progressed without much utility dialog
- In early 2017, ODOT stated that water infrastructure must be relocated in 6 months!
- “AHBL”

# Design Issues

- Bridge reconstruction footprint obliterates water system
- City engineer looked at three design alternatives
- City Work: Temporary waterline, abandon existing line, subsurface infrastructure
- ODOT Work: Line attached to new bridge, connections



# Schedule Constraints and Concerns

---

- ODOT engaged utilities very late during design
- Constraints control and compact time
- ODOT required relocations completed in 6 months
- Budgeting for City capital investments takes years
- Short timelines lead to higher project costs

# Cost & Budgetary Impacts

McKinney Waterline Relocations		
	IFA Budget	Bids
Construction by ODOT	110,000	122,650
Construction by City	260,000	248,178
Engineering	64,000	64,000
ODOT Coordination	15,000	15,000
Labor Standards Oversight	15,000	15,000
Totals	464,000	464,828

- Yikes!...
- ...Yay!

# Water Rate Implications

---

- Waldport rates competitive; \$10 less than average
- Excess capacity for future critical capital project needs
- This relocation project could still affect rates over time

**Status**

CITY OF WALDPOR  
SPECIFICATIONS AND CONTRACT DOCUMENTS

For  
MCKINNEY SLOUGH BRIDGE WATERLINE IMPROVEMENTS

DRAWINGS FOR:

# MCKINNEY SLOUGH BRIDGE WATERLINE IMPROVEMENTS

FOR:

THE CITY OF WALDPOR, OREGON  
PO Box 1120  
Waldport, OR 97394

PROJECT LOCATION  
OR 34 STA 'C' 44+00 TO  
STA 'C' 55+00  
MP 1.49 TO MP 1.69

## DRAWING INDEX

DWG	TITLE
C0.0	COVER SHEET, VICINITY MAP & DRAWING INDEX
C0.1	CONSTRUCTION NOTES
C0.2	EROSION CONTROL NOTES & DETAILS
C0.3	SEQUENCE OF OPERATIONS
C1.0	OVERALL PLAN & SHEET LAYOUT
C2.0	WATERLINE PLAN & PROFILE, STA 10+00 to 15+60
C2.1	WATERLINE PLAN & PROFILE, STA 15+60 to 18+86
C2.2	GIBSON RD & MOFFITT RD WATERLINE PLAN & PROFILE
C3.0	BRIDGE STRUCTURAL DETAILS
C4.0	WATER CONNECTION DETAILS
C4.1	WATER CONNECTION DETAILS
C4.2	CIVIL DETAILS
C4.3	CIVIL DETAILS



Know what's below.  
Call before you dig.



# Risks/Uncertainties



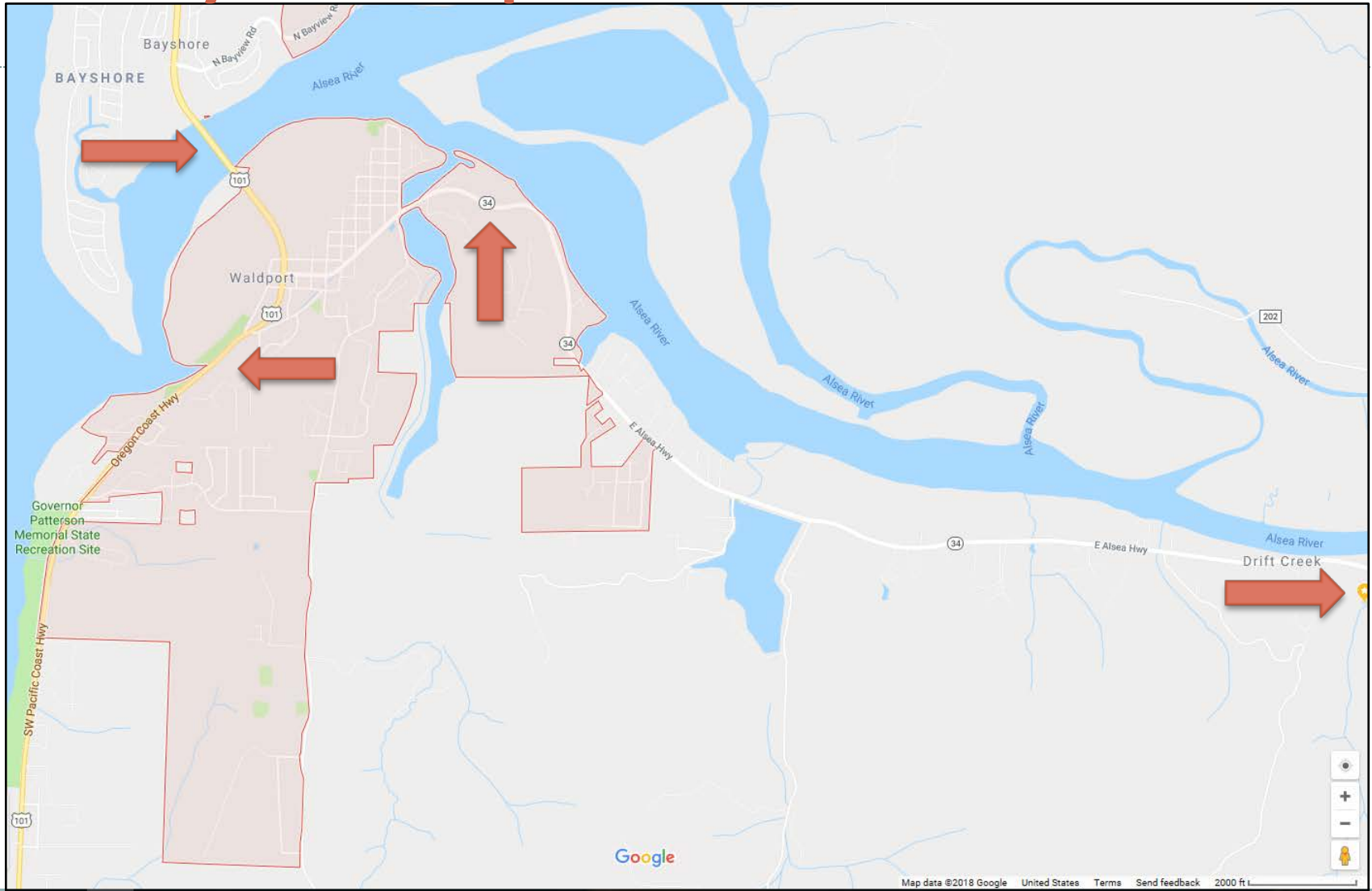
Download from  
Dreamstime.com  
This abstracted image might be considered for promotional purposes only.



Download from  
Dreamstime.com  
This abstracted image might be considered for promotional purposes only.



# City of Waldport Potential Conflicts



# A Roadmap for the Future



Download from  
Dreamstime.com  
This watermarked comp image is for previewing purposes only.

101350908  
Dreamstime.com

- Evaluate impacts on utilities sooner
- Schedules need to be coordinated
- Divide work components
- Planning and funding for utility relocations

# Thank you!

## Q & A

