



TRAVEL TIME RELIABILITY IN PORTAL & THE EFFECTIVE USE OF TRANSPORTATION DATA

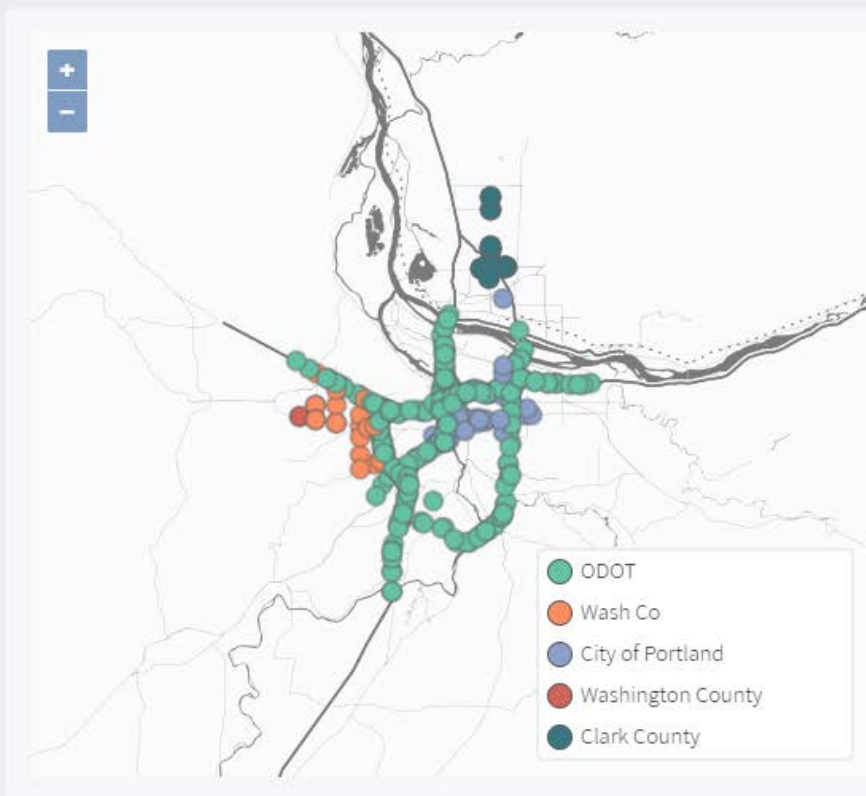
Kristin Tufte

Northwest Transportation Conference

March 13, 2018

Travel Time **i**

Tour



Routes **i**

Select a route

Start week **i**

2018-03-11

Reliability weeks

26

Standard

Aggregate

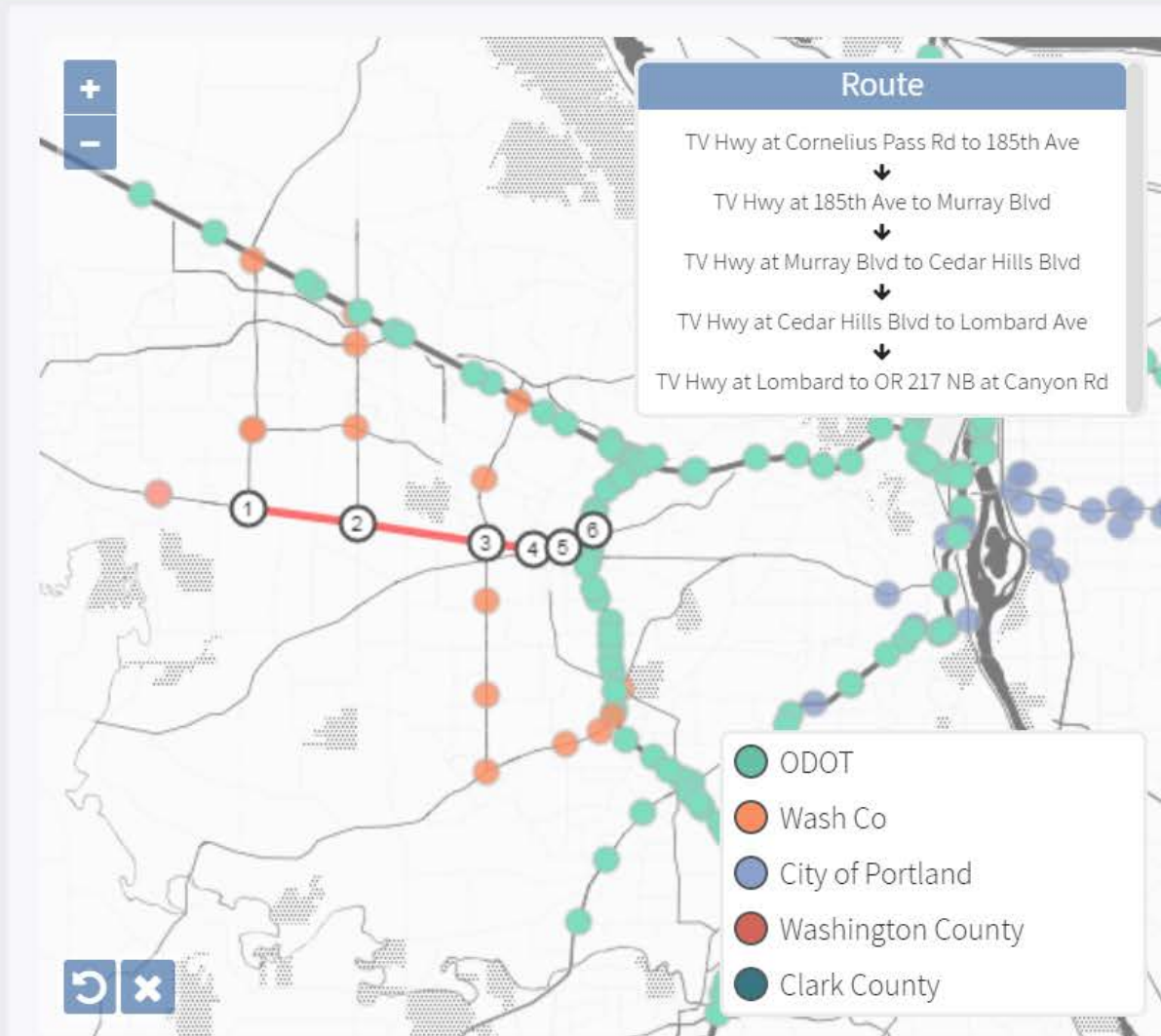
Yearly

Update

Download



Pick a Route & Start Week...



Routes **i**

Select a route

Start week **i**

2018-02-18

Reliability weeks

26

Standard

Aggregate

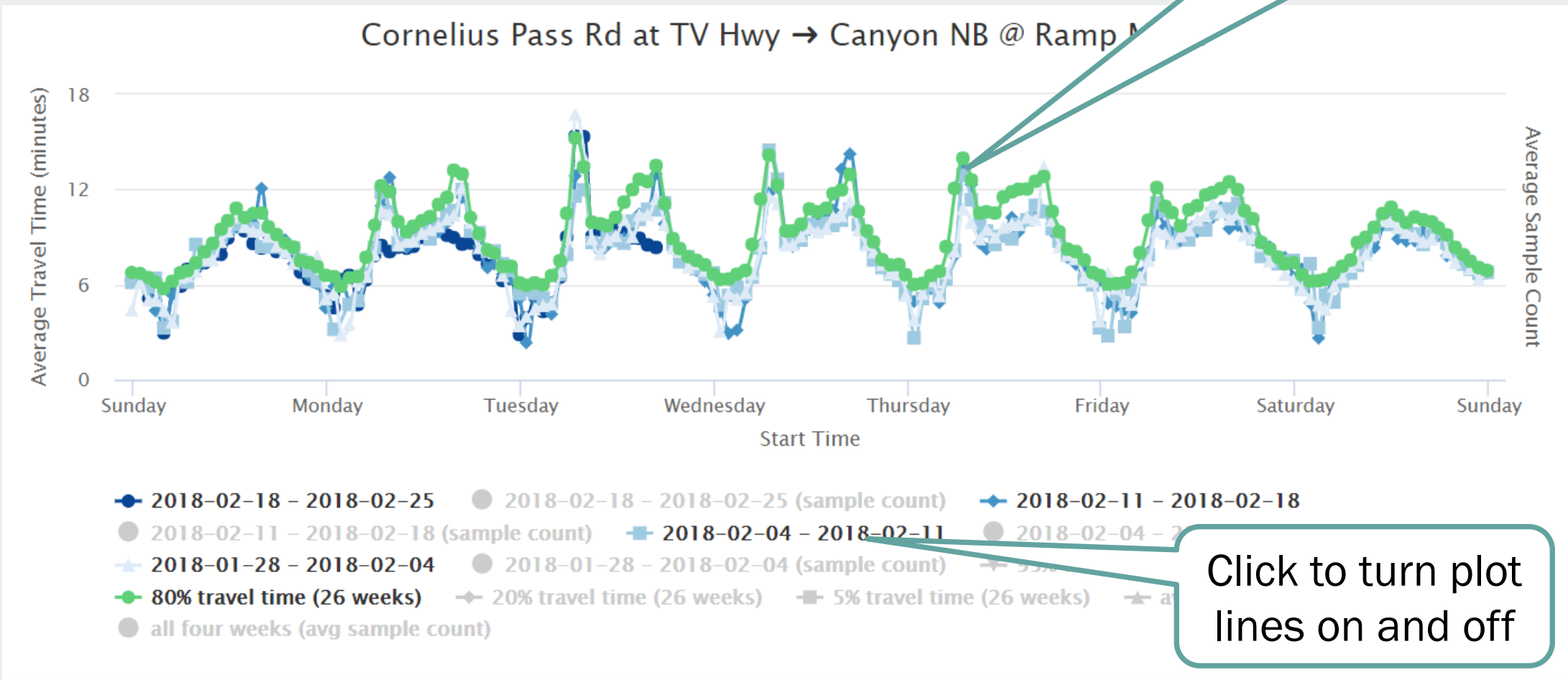
Yearly

Update

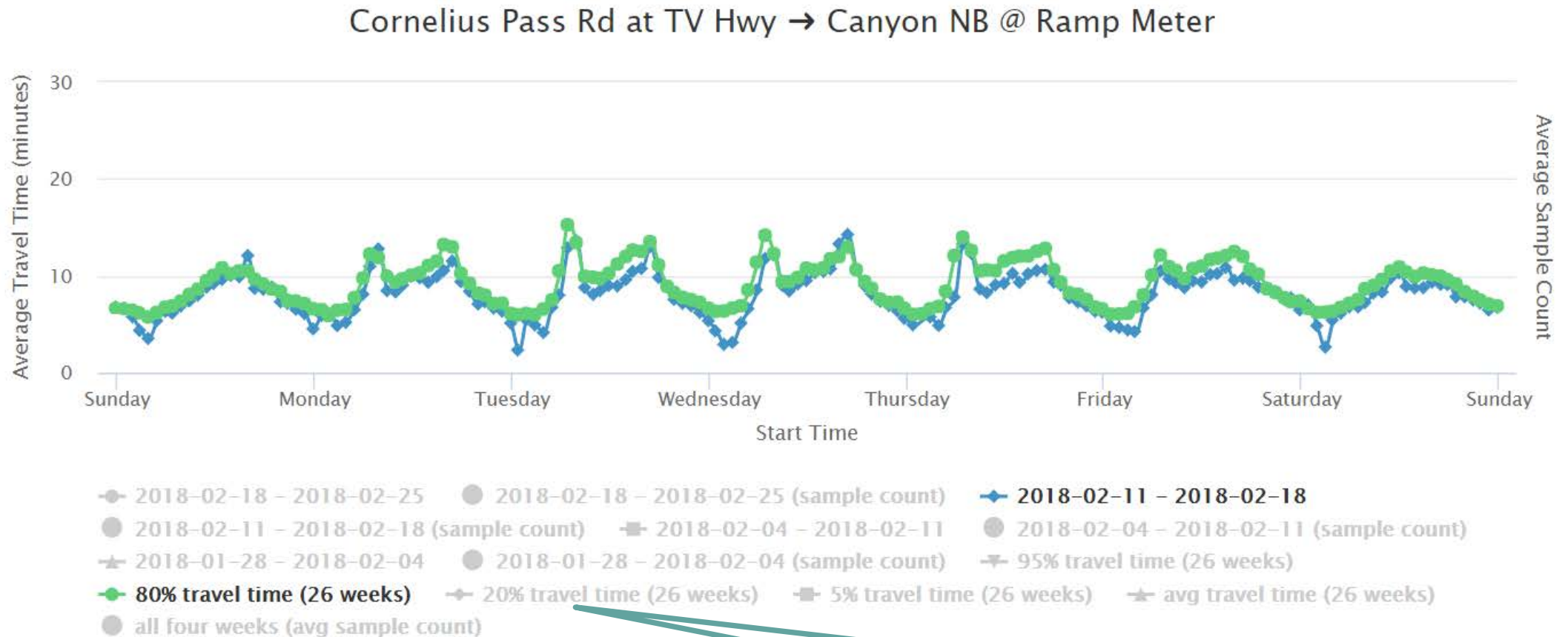
Download

Click update ... View your plot

Green shows 4 weeks + 80th percentile for past 6 months

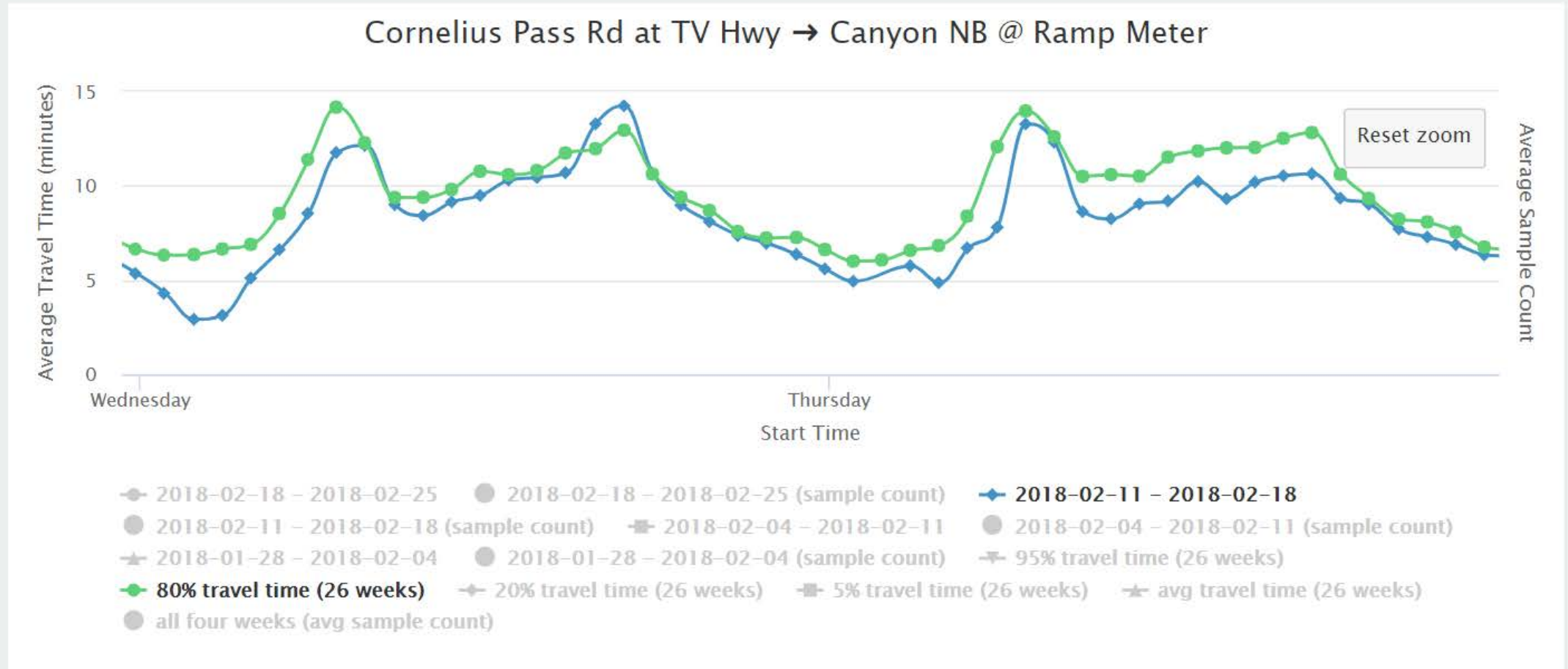


Turn off a few lines...



80th, 20th, 95th and 5th percentile travel time are available

And zoom in ...



What it really looks like...

PORTAL

[Home](#)
[Incidents](#)
[Travel Time](#)
[Corridor Ranking](#)
[Transit \(New\)](#)
[Transit](#)
[WIM](#)

Travel Time i
Tour

Routes i

Start week i

Reliability weeks

Cornelius Pass Rd at TV Hwy → Canyon NB @ Ramp Meter

© Portals 2004-2018

The Aggregate View

Aggregate view shows averages over selected days

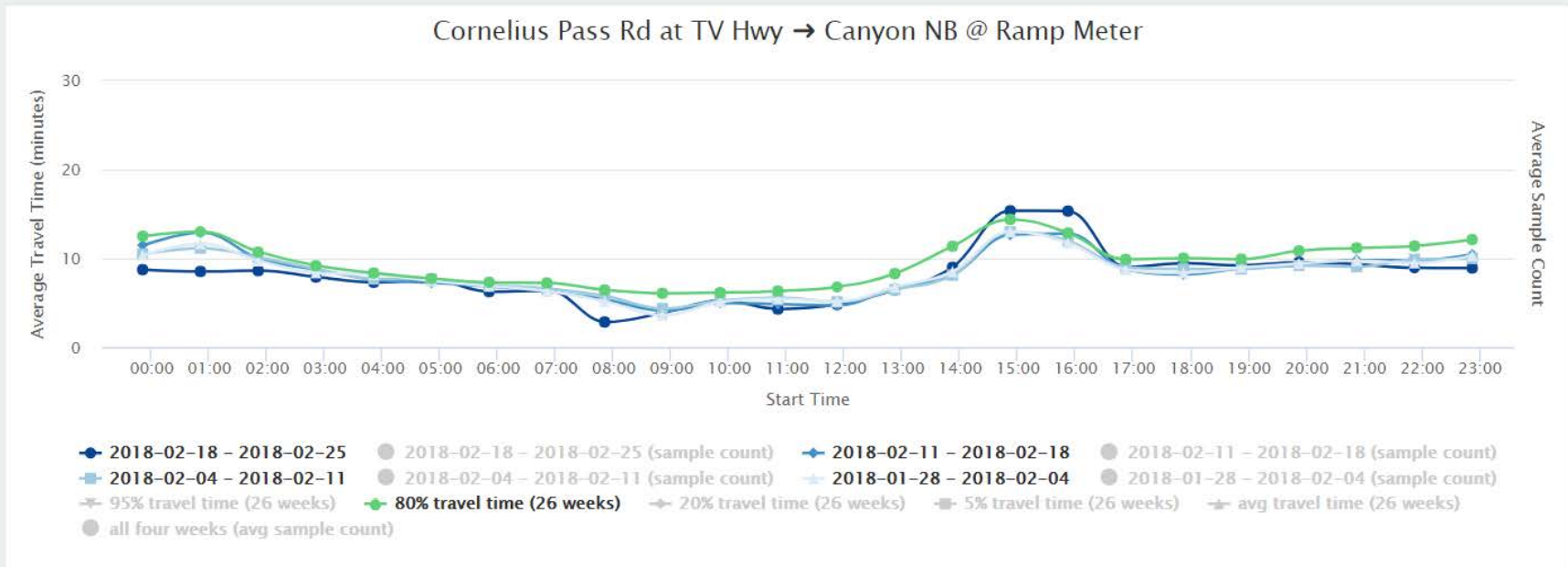
TV Hwy at Lombard to OR 217 NB at Canyon Rd

Standard **Aggregate** Yearly

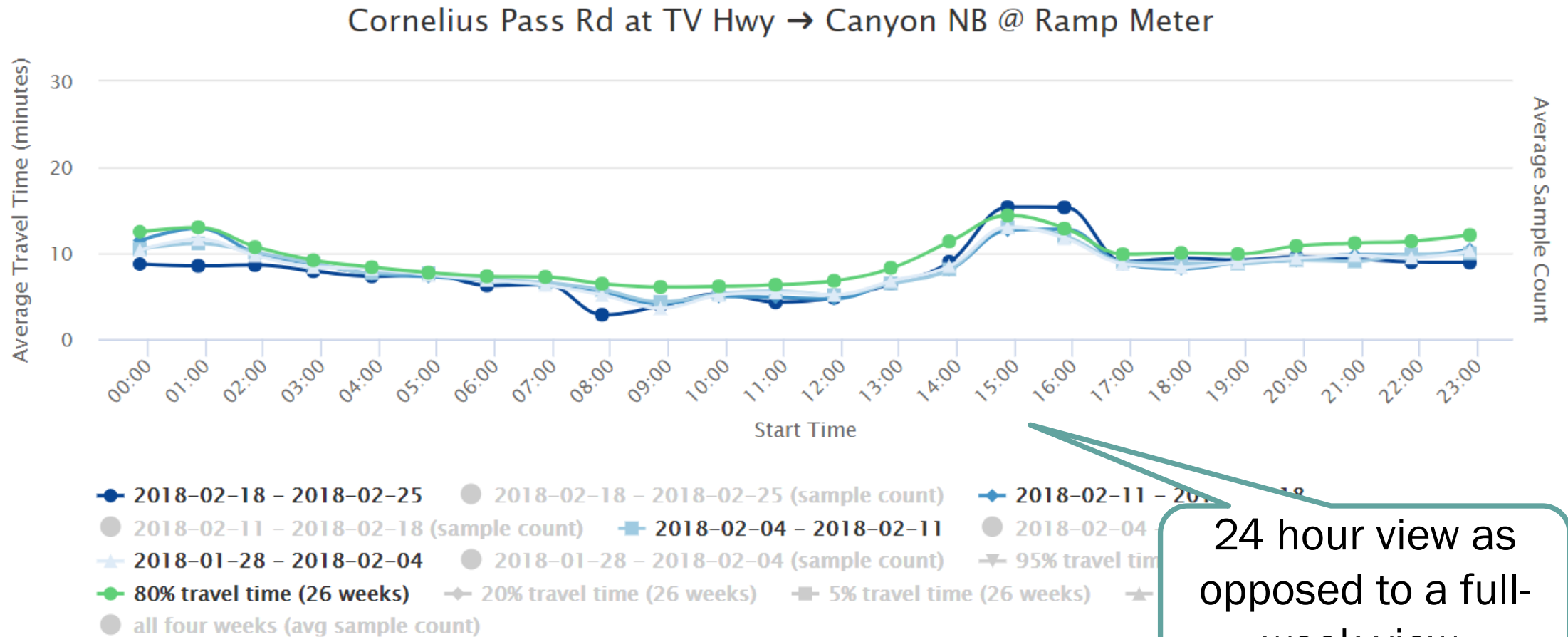
Sun Mon **Tue Wed Thu** Fri Sat

Update Download

- ODOT
- Wash Co
- City of Portland
- Washington County
- Clark County



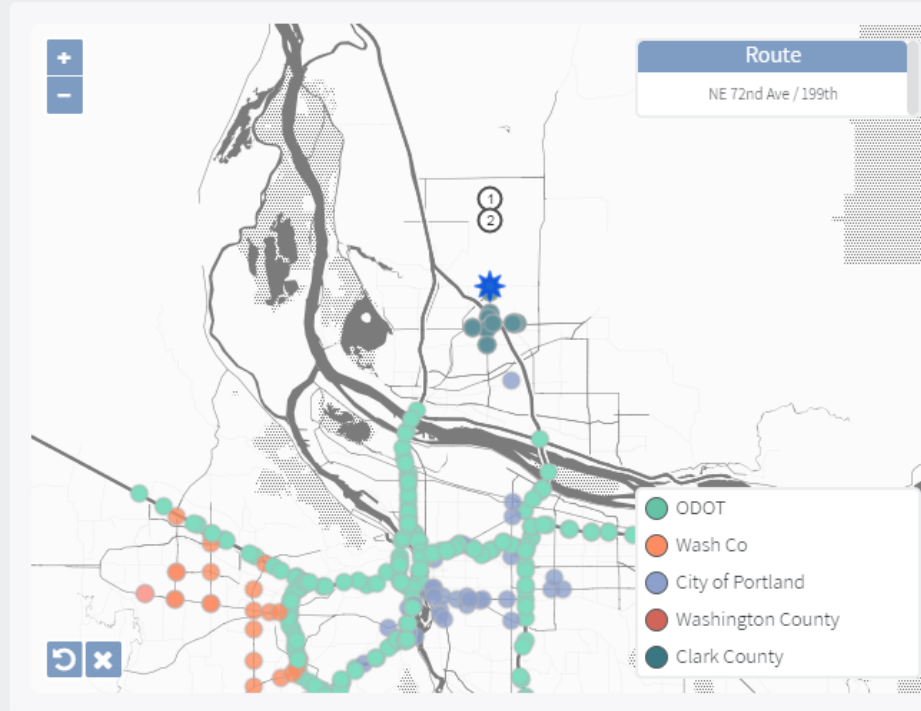
The Aggregate View II



Clark County Travel Time Data

Travel Time ⓘ

[Tour](#)



Routes ⓘ

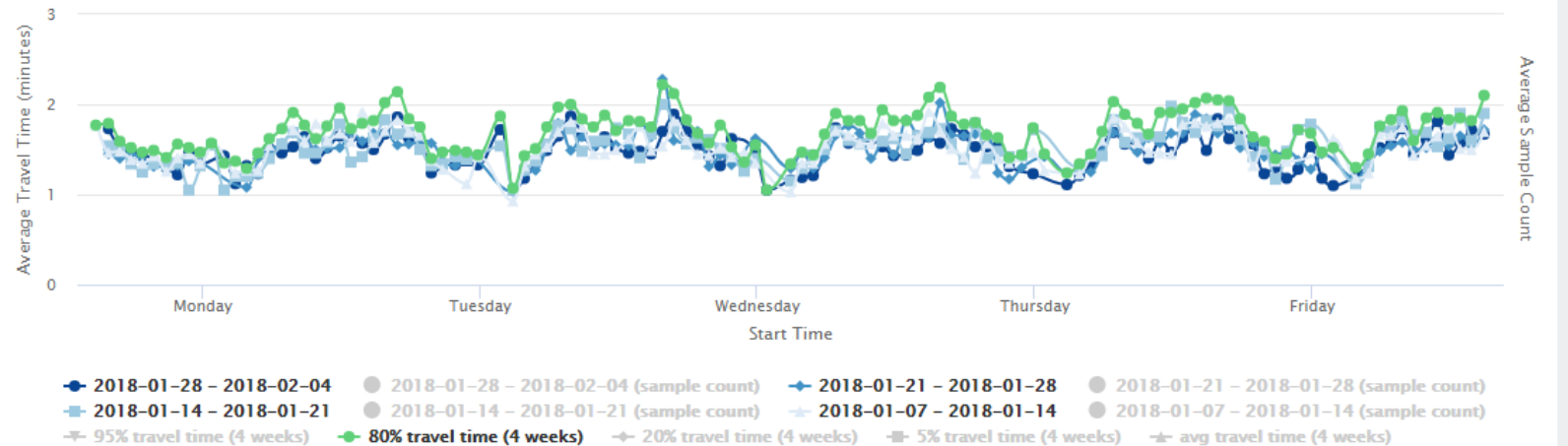
Start week ⓘ 📅

Reliability weeks

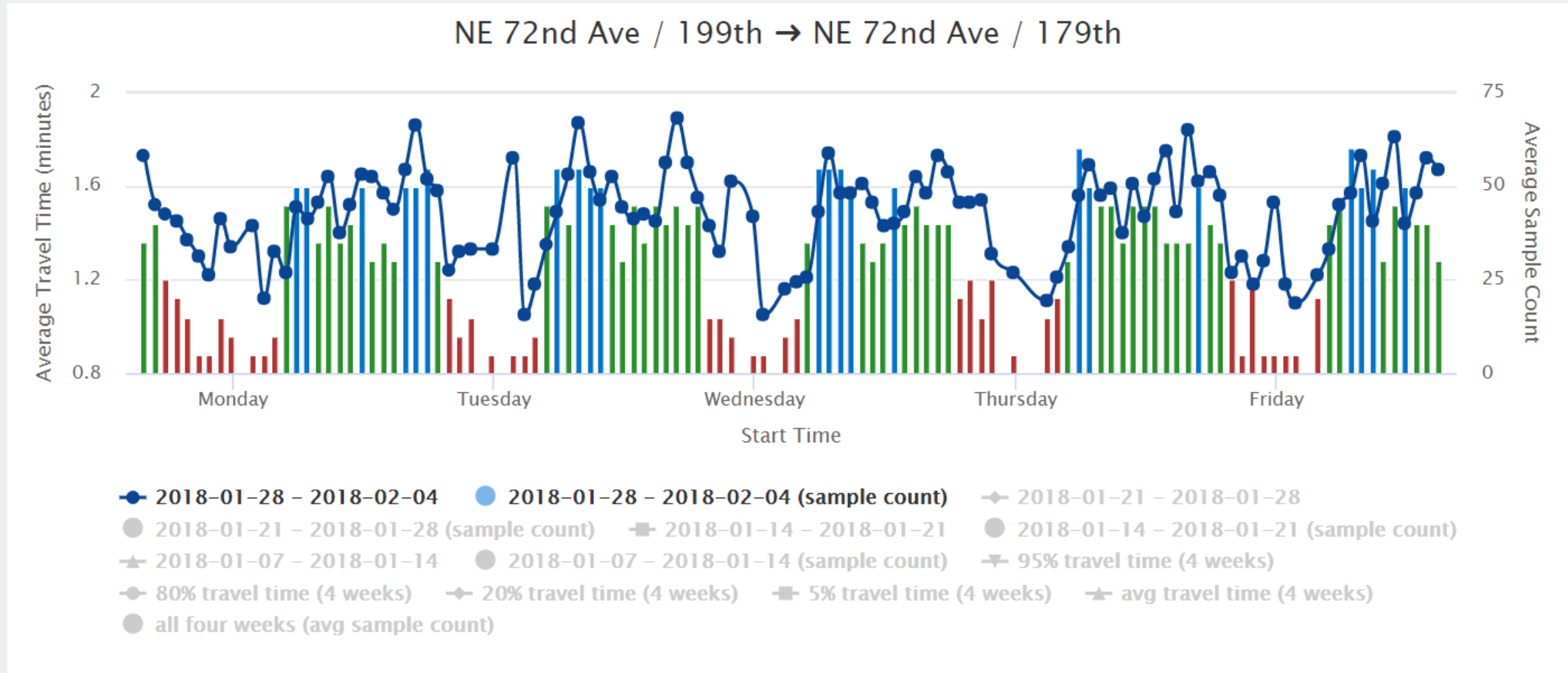
[Standard](#) [Aggregate](#) [Yearly](#)

[Update](#) [Download](#)

NE 72nd Ave / 199th → NE 72nd Ave / 179th

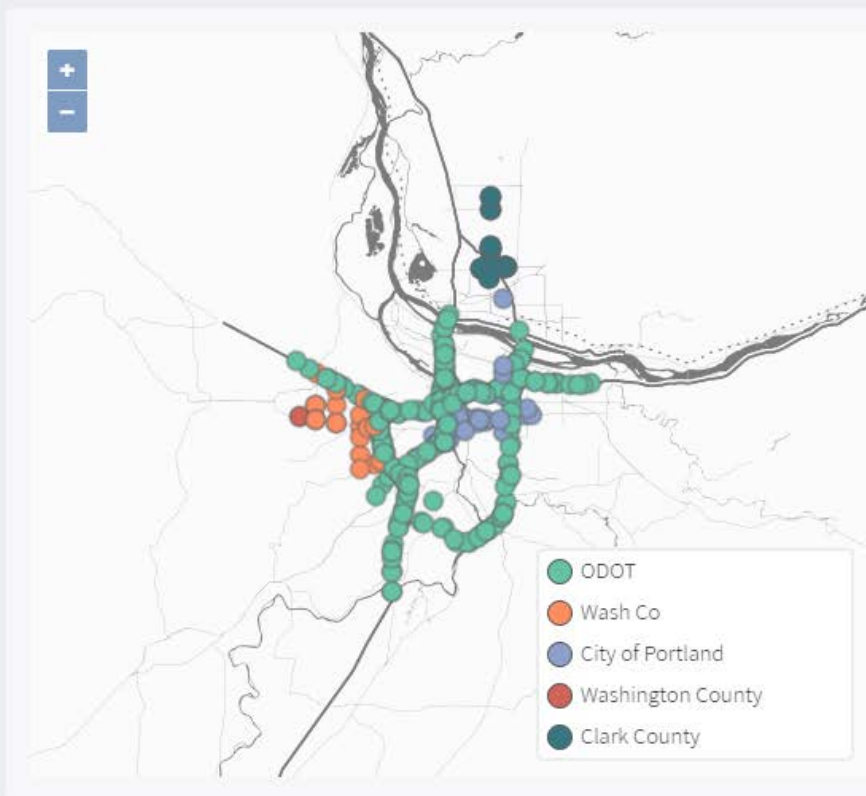


Sample Count (In Development)



Travel Time **i**

Tour



Routes **i**

Select a route

Start week **i**

2018-03-11

Reliability weeks

26

Standard

Aggregate

Yearly

Update

Download



“Silicon Valley is converging with transportation”

- Nikola Ivanov, CATT Lab, (Big Data Applications and Methods in Transportation – TRB 2018 Workshop)

“Silicon Valley is converging with transportation”

- Nikola Ivanov, CATT Lab, (Big Data Applications and Methods in Transportation – TRB 2018 Workshop)

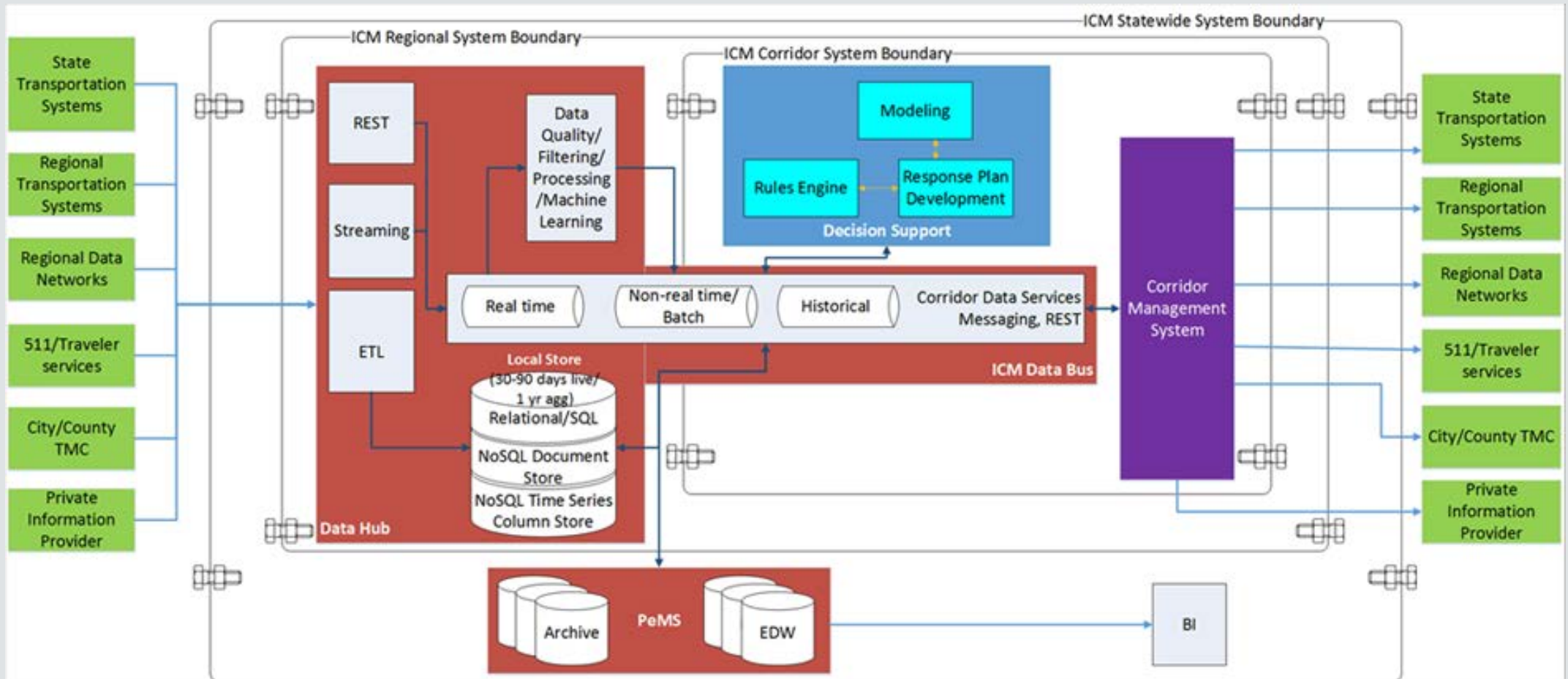
AWS, SPARK, Kafka, ActiveMQ, PostgreSQL, Mongo, Cassandra, Hadoop, HDFS, MapReduce, Yarn, HBase, Zookeeper, Impala, Storm, blockchain, neural networks, feature extraction, supervised learning, Elon Musk, and Mechanical Turk.



Big Data Applications and Methods in Transportation (TRB 2018 Workshop)

- There is a *variety of transportation data* including *big and little data streaming and archived data* and it *requires a variety of systems* to effectively store and process that data to produce useful information for agencies and decision makers.
- To produce useful information and analytics products, it is *important to understand and focus on use cases* and how the information and analytics products are used.
- Silicon Valley is converging with transportation.

Connected Corridors ICM System Architecture



Thank you.

Kristin Tufte
tufte@pdx.edu