

# AASHTO Connected Vehicle Coalition Update

Dean Deeter, P.E.

Athey Creek Consultants



# Topics

- **Introduce V2I Deployment Coalition**
- **Details on Intersection CAV Applications**
- **Details of Work Zone CAV Applications**
- **How the V2I Deployment Coalition Supports Both Types of Applications**

# Vehicle to Infrastructure Deployment Coalition (V2I DC)

- **V2I DC Concept**

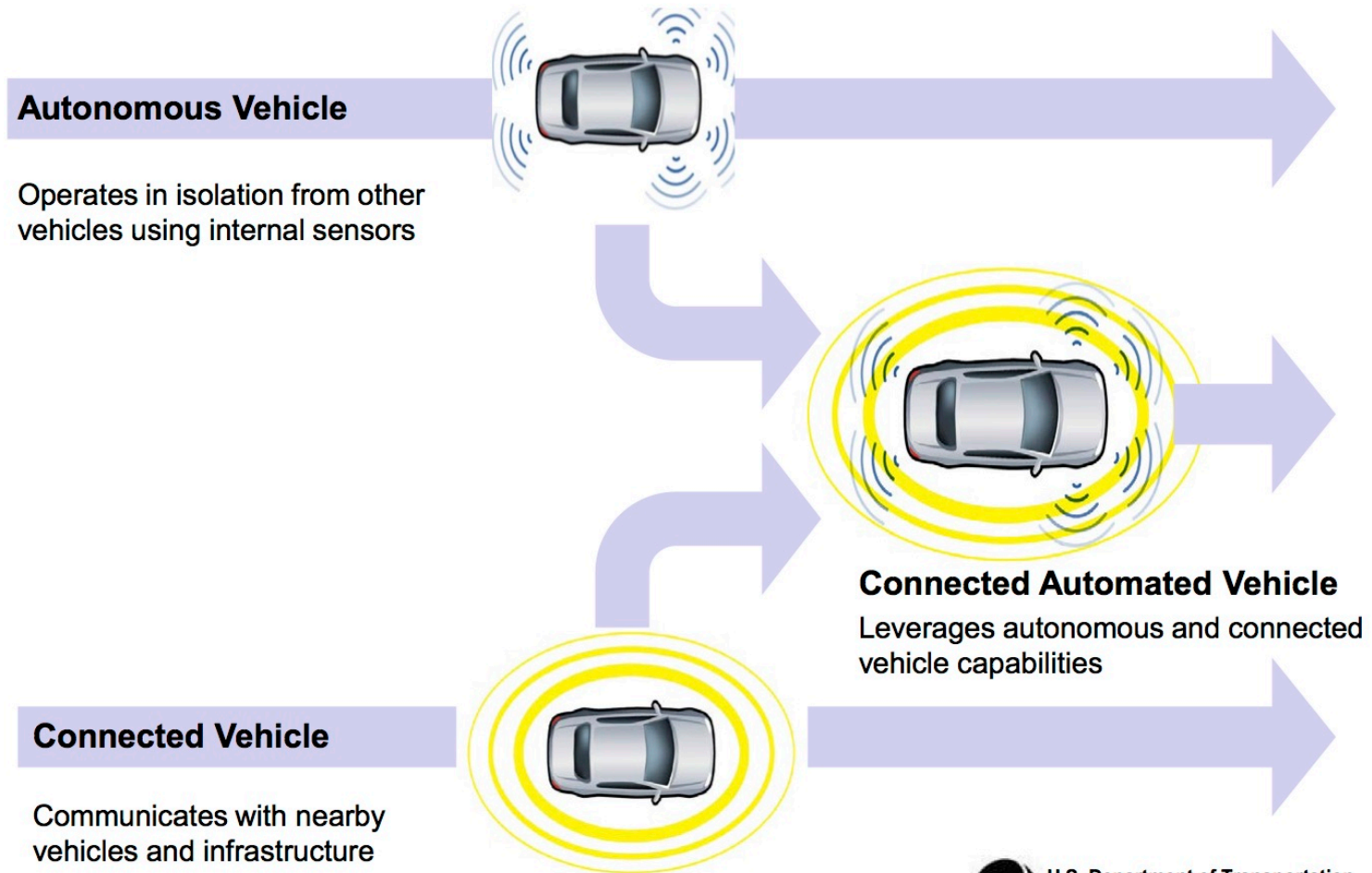
- A single point of reference for stakeholders to meet and discuss V2I deployment related issues

- **V2I DC Approach**

- USDOT asked AASHTO, ITS America and ITE to collaborate on organizing and managing the coalition

# Connected Automation

## Connected Automation for Greatest Benefits



# V2I Deployment Coalition – Phase 2

- **Strategic Initiatives Working Group (Phase 1 TWG 1)**
  - Chaired by Greg Larson, Caltrans
  - Meets 4<sup>th</sup> Thursday of every month at 2pm ET
  - Next meeting: March 22 at 2pm ET
- **Technical Resources Working Group (Phase 1 TWG 4)**
  - Chaired by Faisal Saleem, MCDOT
  - Meets 2<sup>nd</sup> Wednesday of every month at 11am ET
- **Peer Exchange & Outreach Working Group**
  - Chaired by Ed Seymour, TTI
- **To be added to or removed from one or more groups, visit:**  
[https://www.surveymonkey.com/r/V2IDC\\_TWGs](https://www.surveymonkey.com/r/V2IDC_TWGs)

# Connected & Automated Vehicle Executive Leadership Team (CAV-ELT)

## Purpose

- To discuss and develop policies that accelerate deployment of AV, in convergence with CV
- Be proactive and be the voice of our ultimate customers –the roadway user
- Provide strategic guidance and recommend policies and national deployment approaches

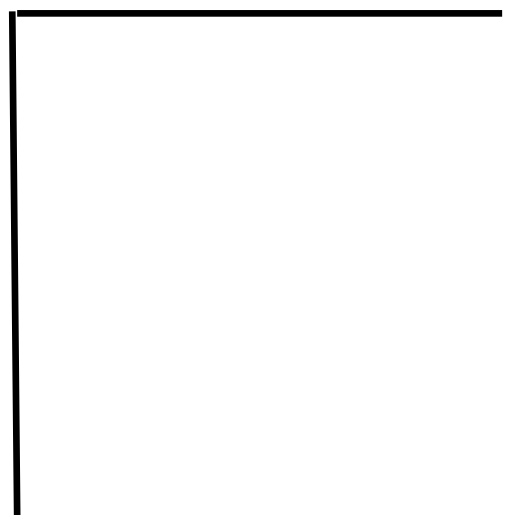
# Who Makes up the CAV-ELT?

| Entity  | # of Members  |
|---|---------------|
| USDOT   | 7 Liaisons    |
| State DOTs                                    | 15 members    |
| Local Governments                             | 5 members     |
| AASHTO  | 3 members     |
| ITE / ITS America                             | 1 member each |
| Automotive Industry                           | 20+ members   |
| TRB   | 1 member      |
| NACO / NACTO / IBTTA<br>/ VII / AAMVA/ Others | 9 members     |

# Specific CAV Applications and Uses

- Apply to both Connected Vehicles and Automated Vehicles
- Not specific to any one communication (DSRC, Cellular, 5G)



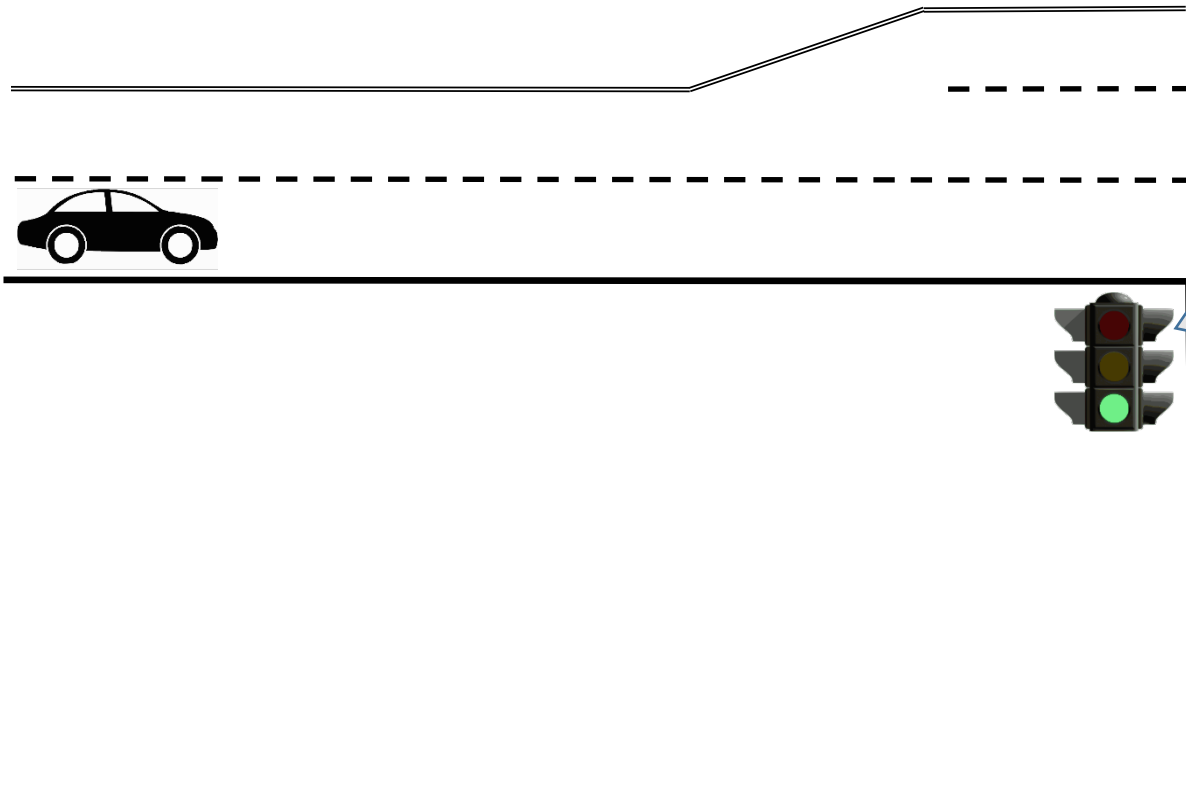


## Possible Applications:

Red Light Violation Warning

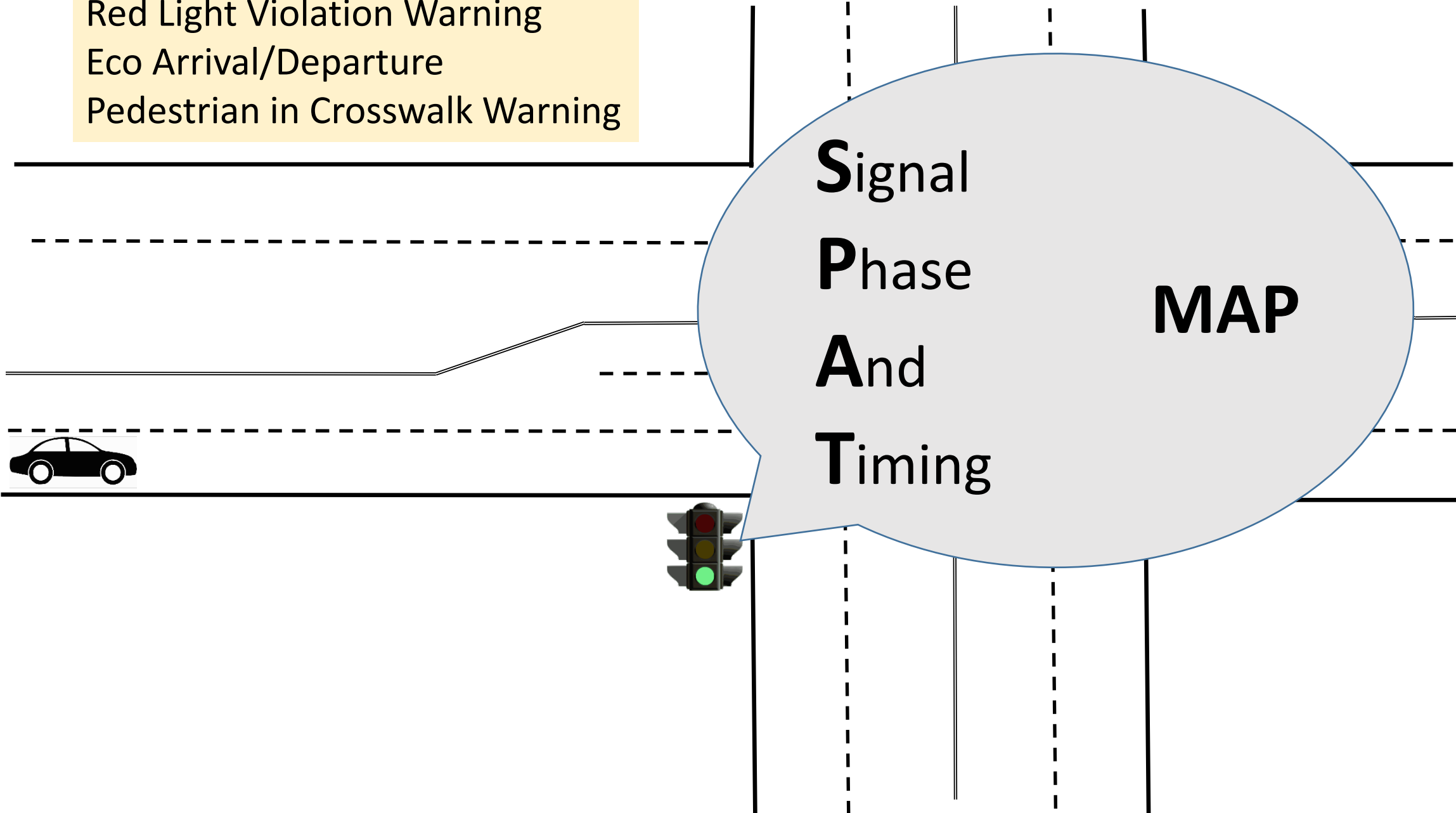
Eco Arrival/Departure

Pedestrian in Crosswalk Warning



The signal on your approach is **Red**  
It will turn **Green** in  
20 seconds. A  
pedestrian has  
triggered the walk  
sign along your path

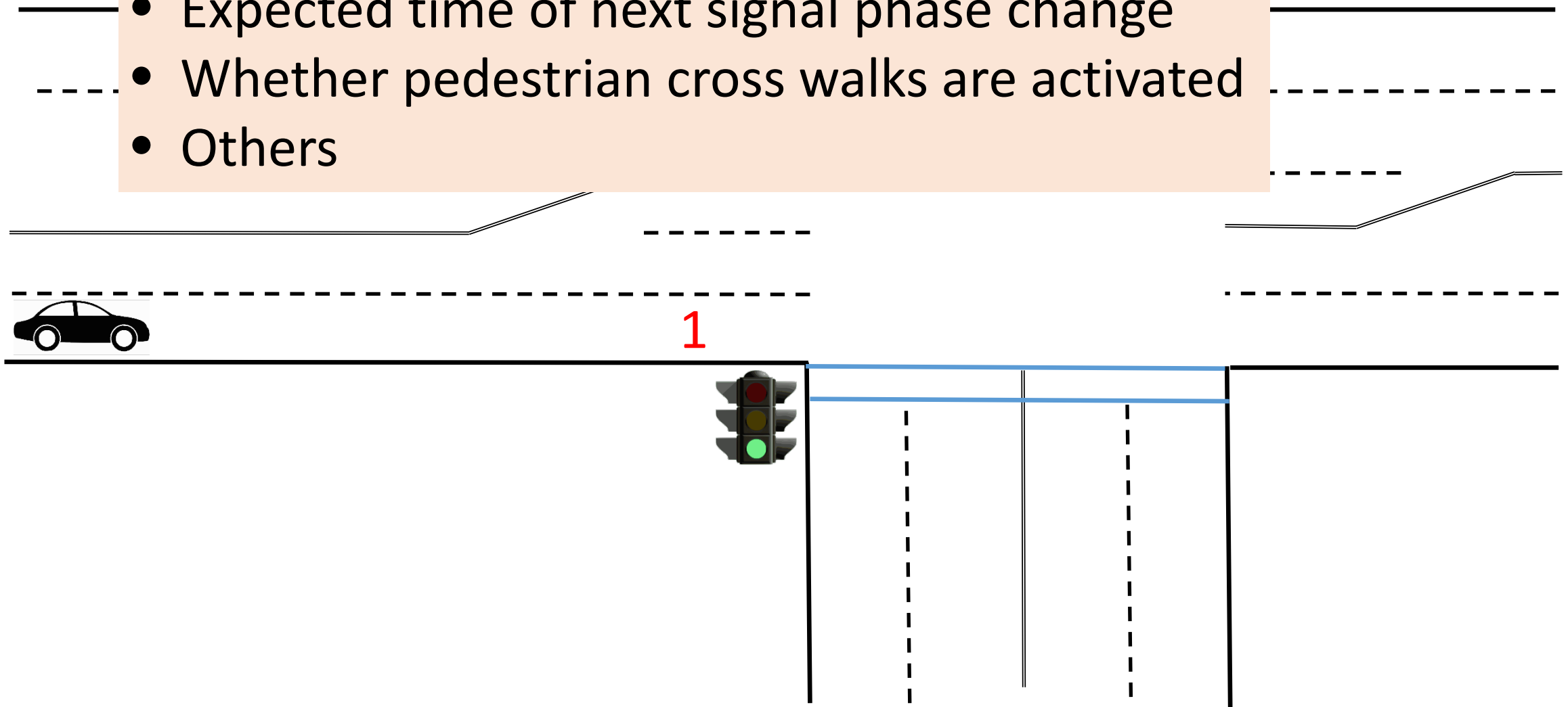
Possible Applications:  
Red Light Violation Warning  
Eco Arrival/Departure  
Pedestrian in Crosswalk Warning



**S**ignal  
**P**hase  
**A**nd  
**T**iming  
**MAP**

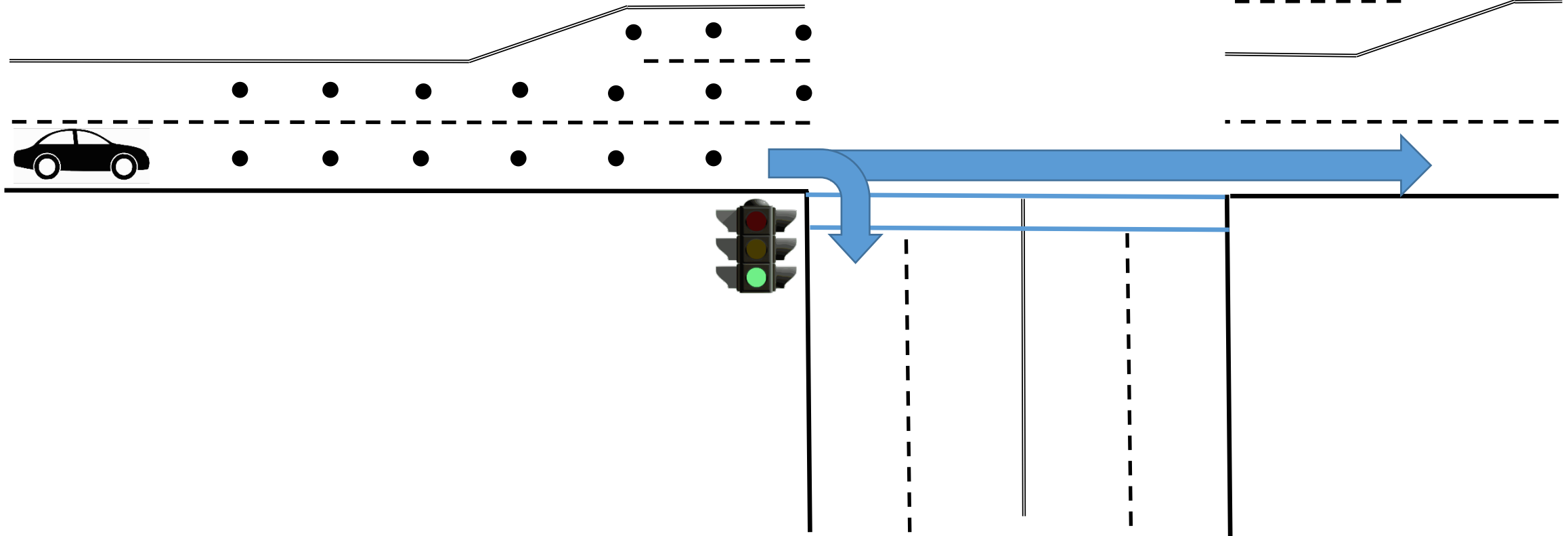
# SPaT Message:

- From the Signal Controller
- Current Signal Status for each approach
- Expected time of next signal phase change
- Whether pedestrian cross walks are activated
- Others



# MAP Message:

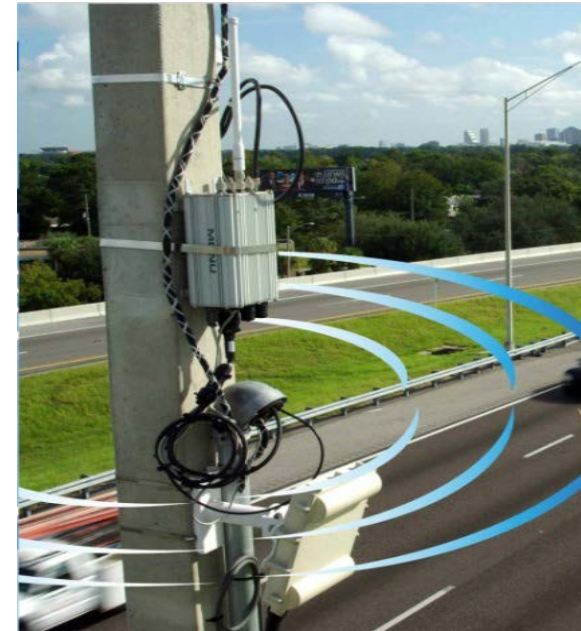
- Details of all lanes
- Nodes (lat/long) of all approaches
- Crosswalks
- Connections from Ingress to Egress



# SPaT Challenge

## What is the Challenge?

To challenge state and local public sector transportation IOOs to cooperate together to achieve deployment of DSRC infrastructure with SPaT broadcasts in at least one corridor or network (approximately 20 signalized intersections) in each state by January 2020



# SPaT Challenge Website

## One-stop shop for SPaT-related information

- Overview
- Current map with SPaT deployment details and contacts
- Resources



 SPaT deployment underway

 SPaT deployment operational

<https://transportationops.org/spatchallenge>

# SPaT Challenge Resources on the Website

| SPaT Challenge Resource                           | Status                     |
|---|----------------------------|
| DSRC Licensing Information                        | On-line / Available        |
| Guidelines for Selecting Corridors                | On-line / Available        |
| Implementation Guidance                           | On-line / Available        |
| SPaT Challenge FAQs                               | On-line / Available        |
| SPaT Challenge Estimated Costs                    | Draft Being Reviewed       |
| SCMS & The SPaT Challenge                         | Draft Being Reviewed       |
| Standards Versioning Management                   | Draft Being Reviewed       |
| Simple Steps to Deployment – Resource Guide       | Draft Being Reviewed       |
| Model Concept of Operations<br>Model Requirements | On-line / Available        |
| Procurement Guidance                              | In Development             |
| <b>SPaT/RLVW Verification Document</b>            | <b>On-line / Available</b> |



# Upcoming SPaT Challenge Webinars

- **Design Considerations, Part 1** - **March 20, 2018 2:00-3:30pm ET**
  - Signal controller interface and creation of SPaT messages
  - Examples of designs for assembling SPaT messages
- **Design Considerations, Part 2** - **April 17, 2018 2:00-3:30pm ET**
  - MAP messages and vehicle position correction
- **MAP Creator Tool Demonstration** - **April 24, 2018 1:00-2:30pm ET**
  - Live technical demonstration and step-by-step training on using the MAP creator tool
- **Design Considerations, Part 3** - **May 15, 2018 2:00-3:30pm ET**
  - Backhaul infrastructure, intersection, and roadside equipment specification, design and installation
- **Deployment & Validation** - **June 12, 2018 2:00-3:30pm ET**
  - Procurement, validation, verification, and security of SPaT deployments

<https://transportationops.org>

# Reduced Speed Zone / Lane Closure:

- Freeway
- Arterial
- Work zone or non-work zone (e.g. school speed zones)



# Reduced Speed Zone / Lane Closure:

- Road or lane closures
- Merging information, warning, and alert
- Reduced /workers present information, warning, alert

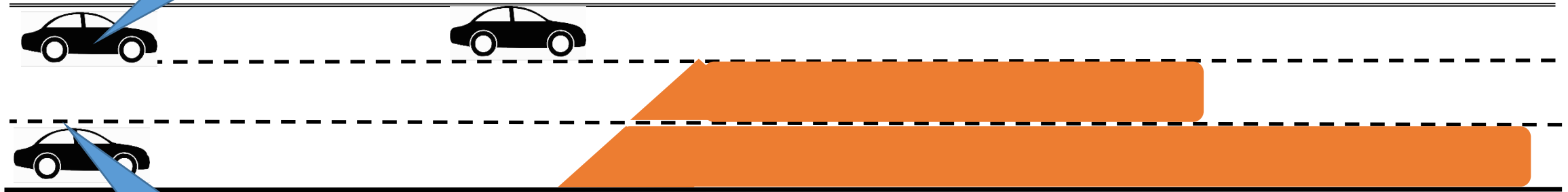


# Reduced Speed Zone / Lane Closure:

- Road or lane closures
- Merging traffic warning, and alert
- Reduced speed information, warning, alert

Slow Down

Merge Left and  
Slow Down



# Reduced Speed Zone / Lane Closure:

● Reference Point – Work Zone start

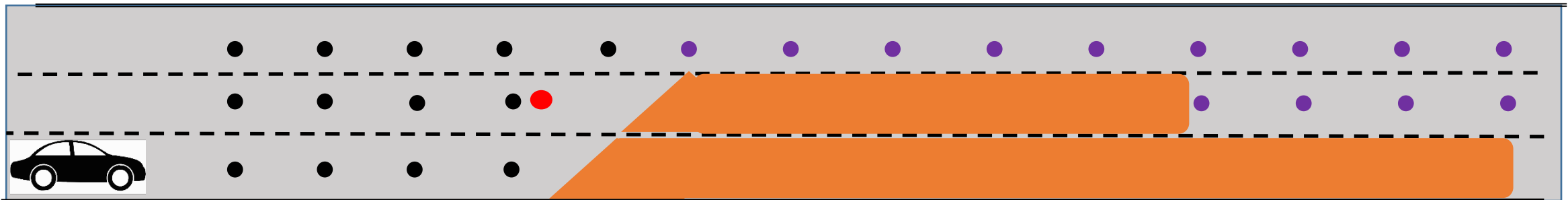
● Approach Nodes

● Work Zone Nodes

Work Zone Lanes

■ - Closed Lanes – Start/End of closure

- Open lanes – Speed limit / Are workers present?



# Reduced Speed Zone / Lane Closure:

● Reference Point – Work Zone start

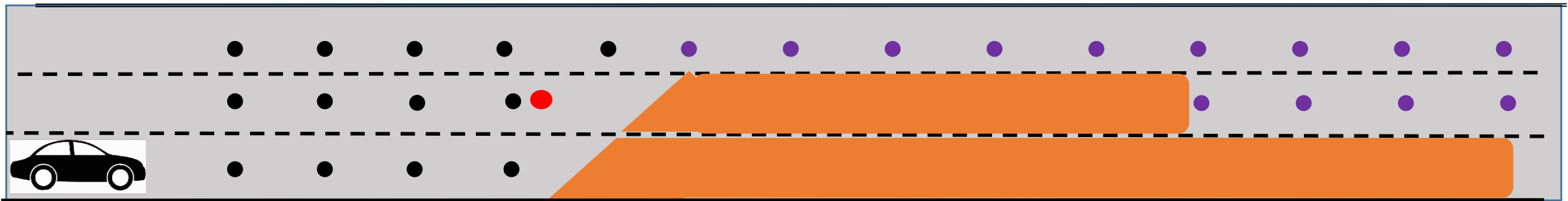
● Approach Nodes

● Work Zone Nodes

Work Zone Lanes

■ - Closed Lanes – Start/End of closure

- Open lanes – Speed limit / Are workers present?



Automated Tool / Software – Open Source Circulation

# V2I Deployment Coalition – Phase 2

- **Strategic Initiatives Working Group (Phase 1 TWG 1)**
  - Chaired by Greg Larson, Caltrans
  - Meets 4<sup>th</sup> Thursday of every month at 2pm ET
  - Next meeting: March 22 at 2pm ET
- **Technical Resources Working Group (Phase 1 TWG 4)**
  - Chaired by Faisal Saleem, MCDOT
  - Meets 2<sup>nd</sup> Wednesday of every month at 11am ET
- **Peer Exchange & Outreach Working Group**
  - Chaired by Ed Seymour, TTI
- **To be added to or removed from one or more groups, visit:**  
[https://www.surveymonkey.com/r/V2IDC\\_TWGs](https://www.surveymonkey.com/r/V2IDC_TWGs)

# Upcoming SPaT Challenge Webinars

- **Design Considerations, Part 1** - **March 20, 2018 2:00-3:30pm ET**
  - Signal controller interface and creation of SPaT messages
  - Examples of designs for assembling SPaT messages
- **Design Considerations, Part 2** - **April 17, 2018 2:00-3:30pm ET**
  - MAP messages and vehicle position correction
- **MAP Creator Tool Demonstration** - **April 24, 2018 1:00-2:30pm ET**
  - Live technical demonstration and step-by-step training on using the MAP creator tool
- **Design Considerations, Part 3** - **May 15, 2018 2:00-3:30pm ET**
  - Backhaul infrastructure, intersection, and roadside equipment specification, design and installation
- **Deployment & Validation** - **June 12, 2018 2:00-3:30pm ET**
  - Procurement, validation, verification, and security of SPaT deployments

<https://transportationops.org>



# Questions?

Dean Deeter

Athey Creek Consultants

[deeter@acconsultants.org](mailto:deeter@acconsultants.org)

503-709-2655

